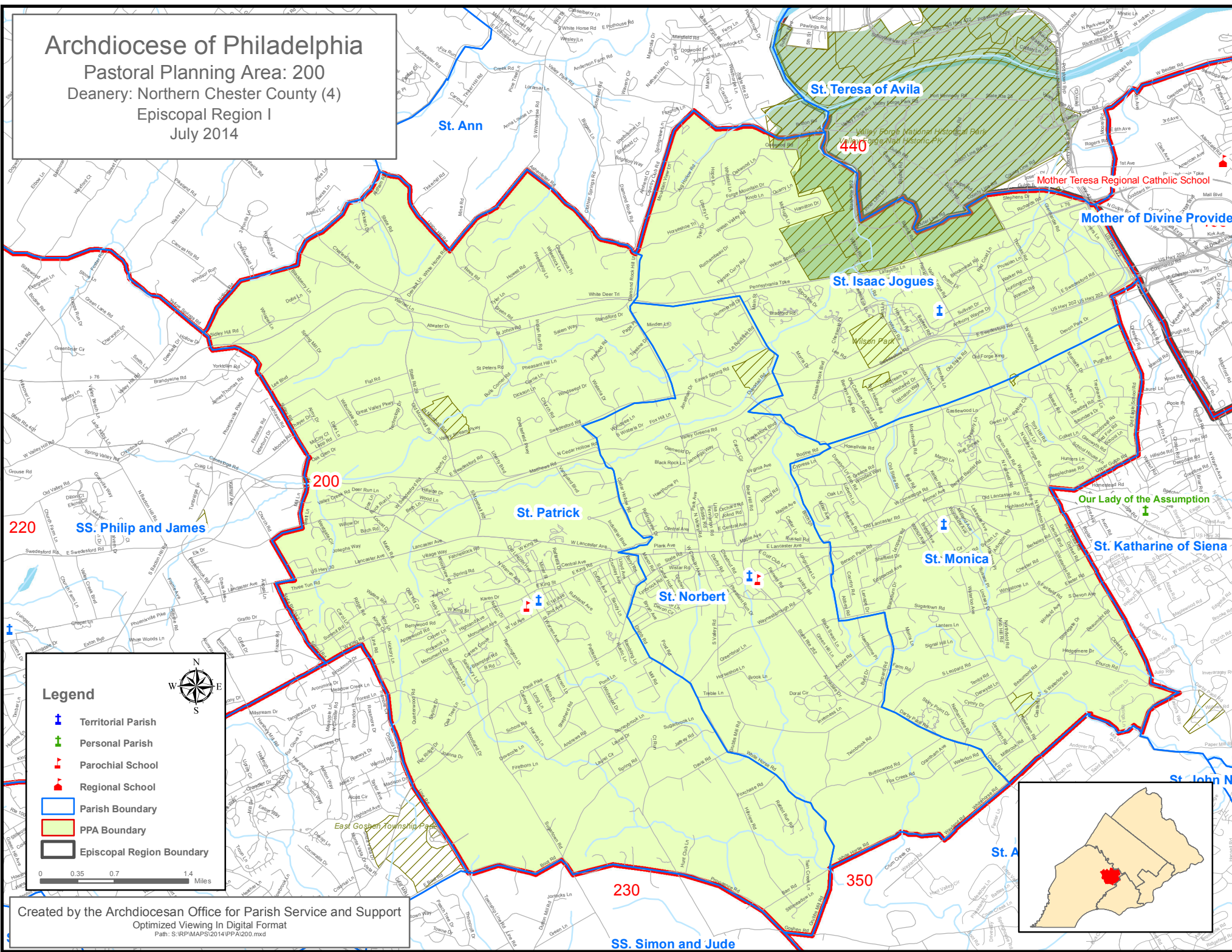


**Archdiocese of Philadelphia**  
**Pastoral Planning Area: 200**  
**Deanery: Northern Chester County (4)**  
**Episcopal Region I**  
**July 2014**



220 **SS. Philip and James**

200

**St. Patrick**

**St. Norbert**

**St. Monica**

**St. Katharine of Siena**

**St. Teresa of Avila**

440

**St. Isaac Jogues**

**Mother of Divine Provide**








**Our Lady of the Assumption**

230

350

**SS. Simon and Jude**

**Legend**

-  Territorial Parish
-  Personal Parish
-  Parochial School
-  Regional School
-  Parish Boundary
-  PPA Boundary
-  Episcopal Region Boundary

